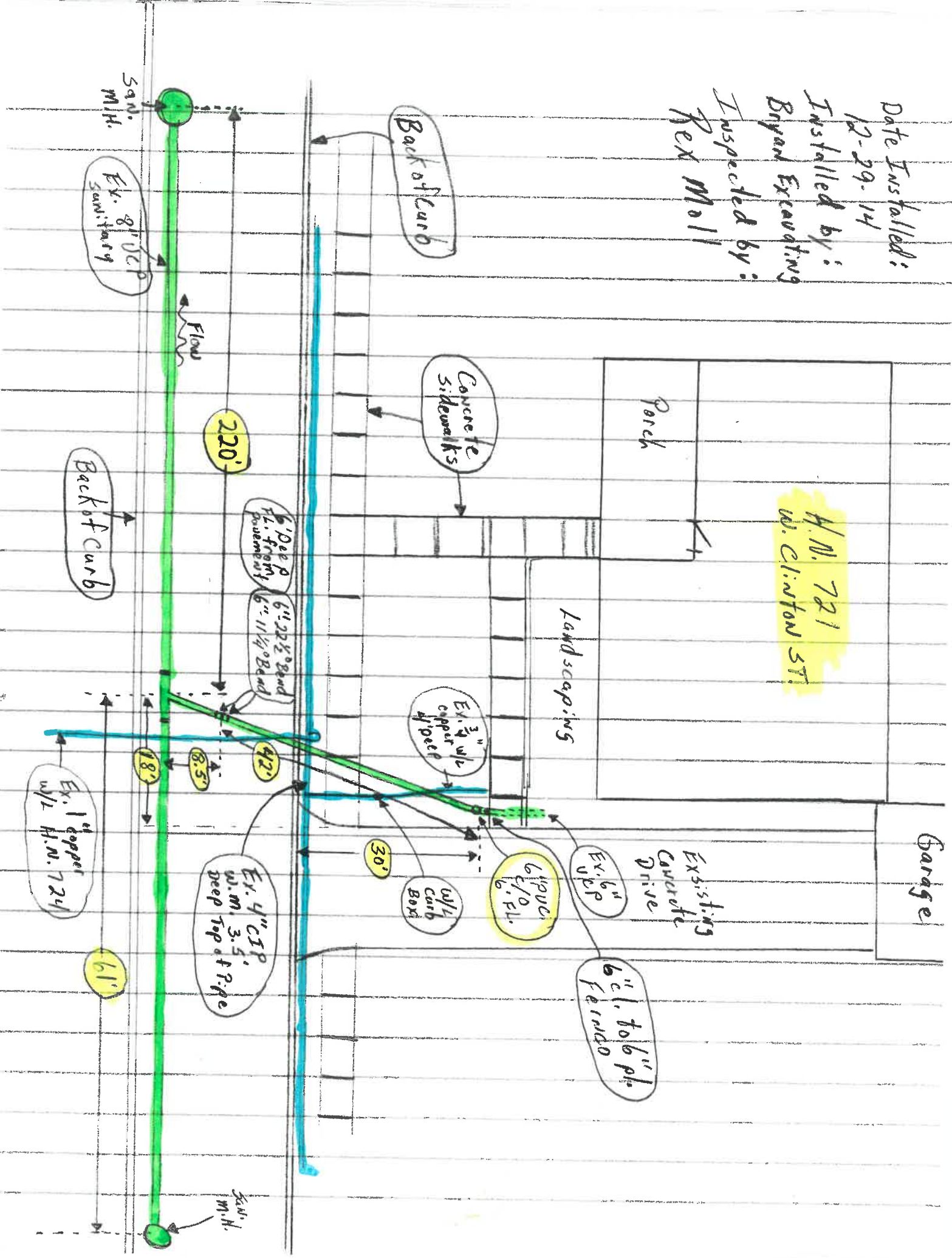


Date Installed: 12-29-14
 Installed by: Bryan Excavating
 Inspected by: Rex Moll

A.N. 721
 W. Clinton St



San. M.H.

Ex. 8" DCP
 Sanitary

Back of Curb

Concrete Sidewalks

Porch

Landscaping

Garage

Existing Concrete Drive

Ex. 6" UP/PP

6" cl. to 6" ph. Fernando

6" PVC 6" E/O FL.

W/L Curb Box

Ex. 3" w/l copper 4" deep

6" Deep P.H. from Basement

6" 11/4" Bend

220'

42'

Ex. 4" CIP w/m. 3.5' Deep Top of T.P. Ac

30'

Flow

Back of Curb

Ex. 1" copper w/l A.N. 721

18'

61'

San. M.H.